

mdf italia



© COPYRIGHT 2019 MDF ITALIA SRL SOCIETA' UNIPERSONALE

2018

AÏKU SOFT

Designed by Jean Marie Massaud

AÏKU SOFT is the new collection of chairs designed by Jean-Marie Massaud, both for home and contract spaces. Now available in padded shell!

AÏKU comes from the Japanese word "haiku" (俳句), and it means a short poem generally composed of three verses. Wonderful poems that in a few words express remarkable meanings; a simple poem, with no lexical frills and conjunctions, taking its strength from suggestions. Due to its incredible shortness, it requires a considerable synthesis of thought and image.

The meaning and the sound of this word reveal the project's concept, to reconcile the paradoxes of uses and sensitiveness. AÏKU can be radical, but at the same time is a refined architecture designed for domestic environments, as well as offices and public spaces.

[WATCH THE 360° VIEW OF THE AÏKU SOFT](#)

PADDED SHELL

Injection moulded polypropylene body, cold moulded padding shaped and applied on the load-bearing piece. The cover is not removable and covers the armchair completely.

BASES

Bases available:

- . 4-legged round-shaped base in steel tube, painted matt white, matt graphite grey or chrome-plated.
- . Sled base in steel wire, painted matt white, matt graphite grey or chrome-plated.
- . Sled base in steel wire with armrests, painted matt white, matt graphite grey or chrome-plated.
- . Sled base in steel wire with armrests and table, painted matt white, matt graphite grey or chrome-plated. HPL 10mm thick table arm available in matt white or matt black.
- . 4-legged tapered base with injection-moulded tube in rectangular section, painted matt white, matt graphite grey or bright black chrome, nickel chrome, gold and pink gold.
- . 4-legged base in solid oak with a natural, bleached or brown finish.

ACCESSORIES

- Injection moulded under-seat for better stacking.
- Hook for sled base, 4-legged base and 4-legged tapered base: dedicated hooking system for seat alignment, made of stiff PA6 plastic, in the colours white and black.
- Place marker: dedicated numbering system with magnet hook, in stiff PA6 plastic, in the colours white and black. For 4-legged round-shaped base and sled base.

PADDED SHELL



OPTIONS

4-legged round-shaped base
L57.6 D55 H78 cm
seat H46.7 cm

sled base
L59.2 D55 H78 cm
seat H46.7 cm

sled base with armrests
L59.2 D55 H78 cm
seat H46.7 cm

sled base with table
L62 D55 H78 cm
open table L62 P62 H78
seat H46.7 cm

4-legged tapered base
L58 D55 H78 cm
seat H46.7 cm

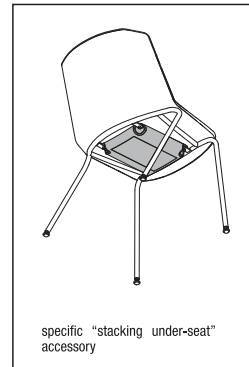
4-legged oak base
L50 D55 H78 cm
seat H46.7 cm

STACKABILITY



max 4 pcs for:
4-legged round-shaped base, sled base, sled base with armrests, 4-legged tapered base (excluding the wooden base)

max 2 pcs for:
sled base with table



specific "stacking under-seat" accessory

Finishing

The number in the dot corresponds to the number of colour/material finish.

Here below, in the section FINISH OPTIONS, please note all the colours of the materials used for this product.

CHAIR

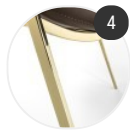
Base



Metal base



4-legged oak base



Chrome base

Cover



Todi



York



Dune



Fall



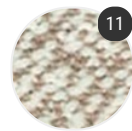
Monaco



Perth



Londra



Parigi



Alchemy



Aloha

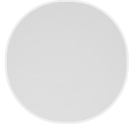


Leather

Finish options

BASE

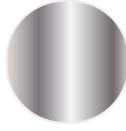
Metal base



Matt painted
white X053



Matt painted
graphite grey
X054



Chrome-
plated

4-legged oak base



Natural oak
X030



Bleached oak
X075



Brown oak
X076

Chrome base



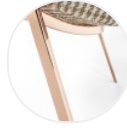
gold chrome



black chrome



nichel chrome



pink gold
chrome

COVER

Todi



white R851
Col. 13



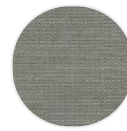
white/beige
R850 Col. 11



grey/sand
R846 Col. 07



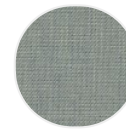
light grey
R849 Col. 10



light
grey/anthracite
grey R848 Col.
09



anthracite
grey/light
blue R847
Col. 08



light
blue/grey
R855 Col. 19



powder
pink/grey
R856 Col. 21



water-
green/military
green R853
Col. 17



orange/grey
R852 Col. 15



water-
green/grey
R854 Col. 18

York



Artificial
leather black
R346 Col. 924



Artificial
leather white
R333 Col. 900



Artificial
leather ivory
R339 Col. 910



Artificial
leather beige
R334 Col. 901



Artificial
leather light
grey R335
Col. 903



Artificial
leather
medium grey
R338 Col. 909



Artificial
leather dark
grey R341
Col. 914



Artificial
leather
graphite grey
R343 Col. 919



Artificial
leather blue
R337 Col. 908



Artificial
leather
burgundy
R345 Col. 923



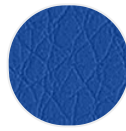
Artificial
leather brown
R344 Col. 922



Artificial
leather olive
green R336
Col. 907



Artificial
leather light
green R349
Col. 931



Artificial
leather
bluette R348
Col. 929



Artificial
leather
mustard
yellow R351
Col. 935



Artificial
leather
orange R350
Col. 933



Artificial
leather red
R340 Col. 913



Artificial
leather rust
R342 Col. 917

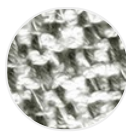


Artificial
leather testa
di moro R347
Col. 927

Dune



white-light
grey R364
Col. 428.103



white-
medium grey
R361 Col.
428.039



dark grey-
light grey
R357 Col.
428.000



white-blue
R359 Col.
428.034



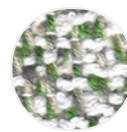
blue-beige
R363 Col.
428.050



black-beige
R358 Col.
428.010



white-red
R360 Col.
428.035



white-light
green R362
Col. 428.043

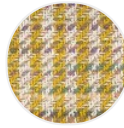
Fall



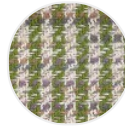
white-mud
R477 Col.
502.000



white-orange
R478 Col.
502.160



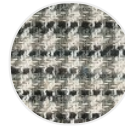
white-yellow
R479 Col.
502.180



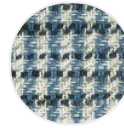
white-green
R480 Col.
502.200



white-grey
R481 Col.
502.220



white-black
R482 Col.
502.221



white-light
blue R483
Col. 502.240

Monaco



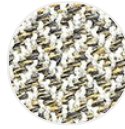
white-beige
R313 Col.
443.000



white-light
grey R314
Col. 443.001



beige-black
R319 Col.
443.040



white-yellow
R318 Col.
443.014



white-red
R315 Col.
443.007



white-light
green R317
Col. 443.011



white-blue
R316 Col.
443.010



beige-
anthracite
grey R320
Col. 443.060

Perth



yellow R393
24



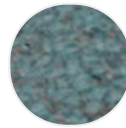
beige R385 01



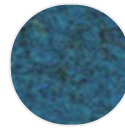
light grey
R395 30



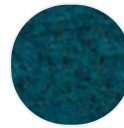
turtledove
R386 04



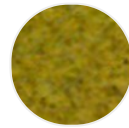
ice light blue
R387 07



light blue
R388 08



green R389
09



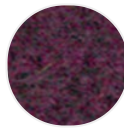
light green
R394 25



rust R392 20



orange R391
19



burgundy
R390 13



black R396 31



powder pink
R463 Col. 06



dark blue
R464 Col. 11

Londra



white R058
Col. 01



brown R060
Col. 06



grey R063
Col. 09



graphite grey
R062 Col. 08



black R061
Col. 07



red R311 Col.
021



burgundy
R310 Col. 020



rust R312
Col. 023



turtledove
R304 Col. 05



green R306
Col. 012



light blue
R307 Col. 015



blue R308
Col. 016

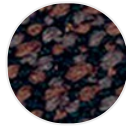
Parigi



White-beige
R429 Col. 001



beige-dark
grey R430
Col. 002



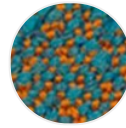
dark grey-
brown R431
Col. 003



light grey-
dark grey
R432 Col. 004



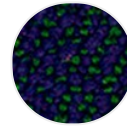
dark grey-
black R433
Col. 005



light blue-
rust R434
Col. 006



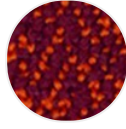
rust-beige
R435 Col. 007



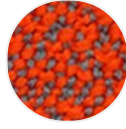
blue-green
R436 Col. 008



green-rust
R437 Col. 009



burgundy-
orange R438
Col. 010



orange-light
blue R439
Col. 011

Alchemy



light grey
R844 Col. 43



brown R829
Col. 04



orange R831
Col. 14



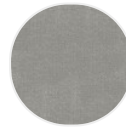
dark orange
R830 Col. 13



dark red
R838 Col. 28



gray-green
R845 Col. 44



medium grey
R833 Col. 23



blue R843
Col. 41



cobalt blue
R842 Col. 38



water-green
R840 Col. 35



olive green
R832 Col. 18



sage R839
Col. 31



emerald
green R841
Col. 37



plum R836
Col. 26



powder pink
R834 Col. 24



violet R835
Col. 25

Aloha



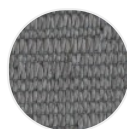
white R873
Col. 02



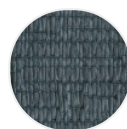
sand R874
Col. 04



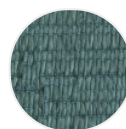
dark orange
R875 Col. 05



grey R876
Col. 07



dark grey
R877 Col. 08



light blue
R878 Col. 09

Leather



leather white
R804



leather sand
R814



leather beige
R803



leather ivory
R802



leather
yellow R808



leather
apricot R801



leather rust
R813



leather red
R812



leather
burgundy
R807



leather
tobacco
R815



leather testa
di moro R816



leather black
R810



leather grey
R809



leather
bluettes R806



leather blue
R805



leather green
R817